

# IT Architecture - Smart City

## KnowNow designs smart city IT Infrastructure



KnowNow use a TOGAF based methodology to capture and design IT demands for a city or place.

- Ensuring that a smart places IT requirements are joined up, interoperable & standards based.
- Use an outcomes centric model - based on a reference architecture - *Municipal Reference Model* from IBM
- Cloud based System Architect tool used to underpin the approach and capture the output.

### What we can do for you.....

- Design and document the IT Blueprints for a place covering:
  - Infrastructure
  - Data Management
  - Information Systems

### Other Services Available:

- Application design consulting
- IT Infrastructure design consulting
- IT Service Management consulting
- IT Security Management consulting
- IT Asset Management consulting
  
- Tool enables: impact assessment, what if scenario planning & capacity management

# Smart Retail Applications

## KnowNow design, deliver and run your app

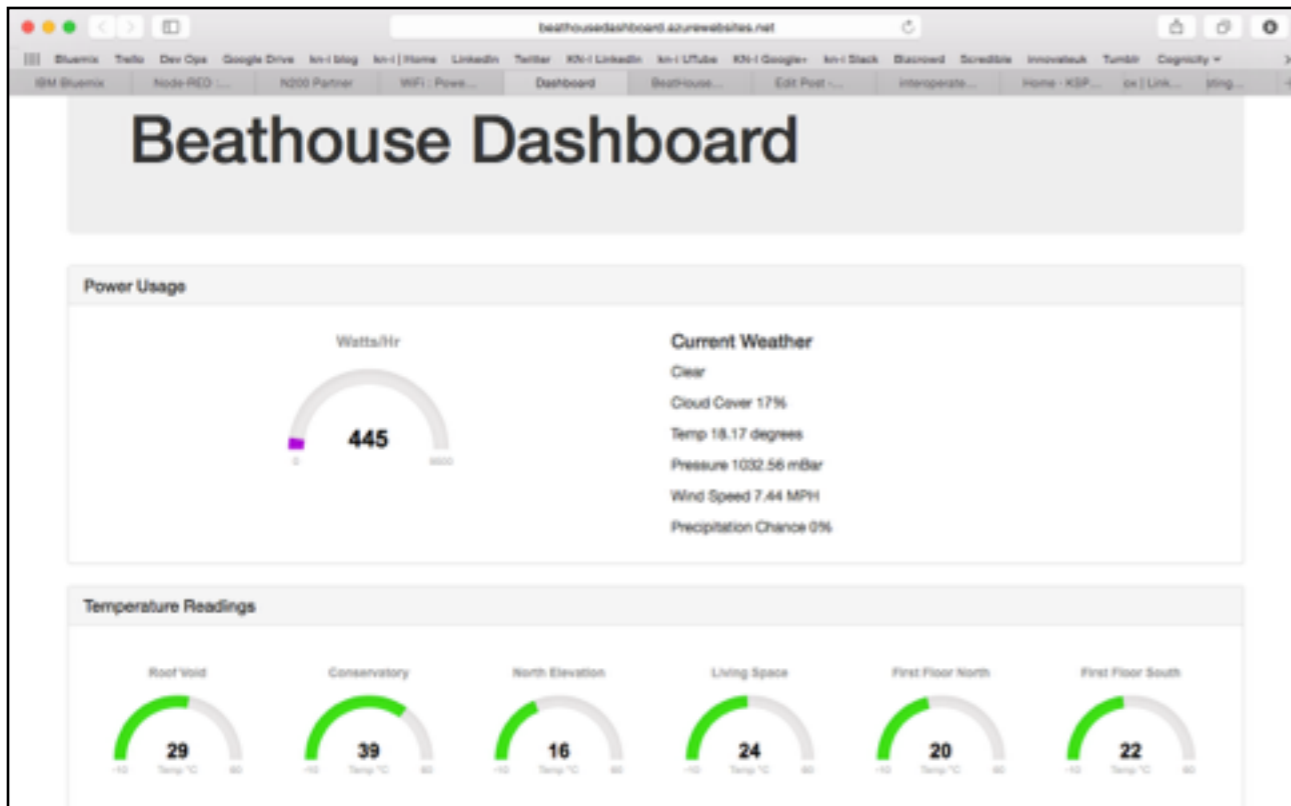


### What we can do for you....

- KnowNow can:
  - Provide application design consulting:
    - User-centric design
    - Product & data lifecycle management
    - Security by design
    - Product & Technology assessments
    - Multiple platform (mobile & browser).
    - Cloud advice
  - Provide application delivery
    - Develop your app
    - Testing your app
    - Run-time services using our Cloud
    - IBM Business Partner
- Cognicity Challenge at Canary Wharf - Jan - Apr '15
  - KnowNow Cohort 1 Finalists
- Created the 'kn-i' app or "*Eat Sleep Play Go*"
- KnowNow provided application design & consultancy, systems engineering and application hosting and management.

# Internet of Things - BeatHouse

## KnowNow design, deliver and run IoT projects

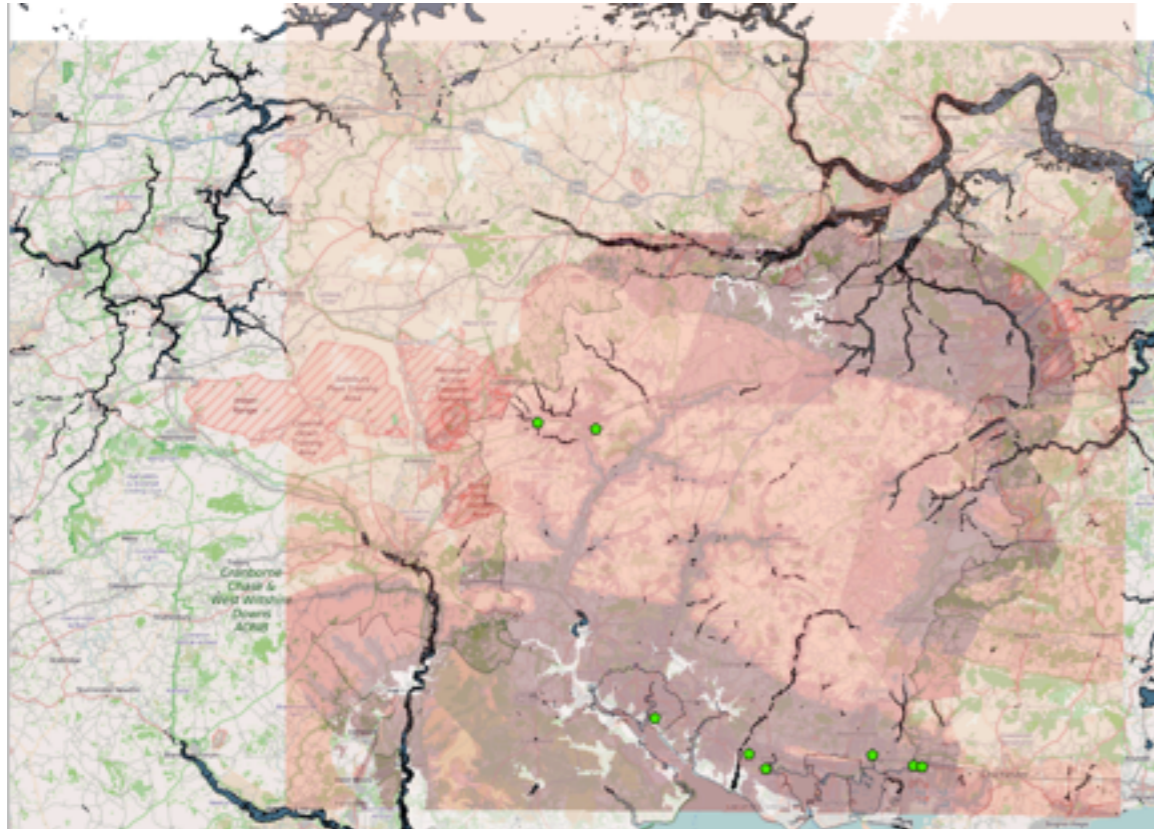


## What we can do for you...

- KnowNow can:
  - Provide IoT consulting that covers:
    - Data lifecycle management
    - Security of IoT
    - Performance on the edge and in the centre.
    - Product & technology assessment of different IoT offerings.
  - Provide IoT services
    - design your new IoT service
    - deliver your IoT project or service.
    - run your IoT service on our cloud.
- Home sensing that can monitor temperature, energy consumption and personal health data
- Actuates home heating, air venting etc.,
- The system learns patterns and acts if the data shows a deviation from the normal pattern.

# Big Data - Flood Event Model

**KnowNow won the 2014 STFC ODI open data competition.**



- KnowNow's Flood Event Model predicts flood events in Hampshire with  $> 85\%$  accuracy
- Can identify the probability of a flood event occurring at a specific location.
- Uses a number of open datasets including topography, geology, ground water levels, current weather and river flow.

## What we can do for you...

- KnowNow are data domain experts:
  - Social media sentiment analysis.
  - Big data visualisation, correlations and pattern matching
  - Open data analytics to find a new answer
- KnowNow can provide:
  - Consultancy
    - Data lifecycle management
    - Understand potential outcomes
  - Design
    - Find the data and identify algorithms
  - Run your project on our cloud.
  - Project management of your big data project



[chris.cooper@kn-i.com](mailto:chris.cooper@kn-i.com)

07967 275 469

@mobilitycooper

[david.patterson@kn-i.com](mailto:david.patterson@kn-i.com)

07738 310 999

@david\_patto

[www.kn-i.com](http://www.kn-i.com)



@knownowinfo



/knownowinfo



+knownowinfo